

Helping Ohioans with Healthcare Benefit Choices



NEWS

January 2020

Board of Directors



President
Leslie James



Vice President
Deborah Bogdan



Treasurer
Richard Muccio

Letter from the President, Leslie James

February is a big month for our organization. On the 11th of February, OAHU is having a Single Payer Healthcare Certification Course in Mansfield, Ohio. If you have not already signed up, consider joining your fellow OAHU members and earn one of many certifications available to you from NAHU.

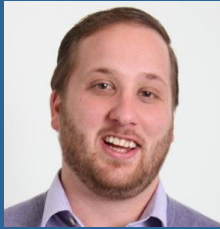
On the 19th, NEOHUA will be having our general membership meeting at the Brecksville Rec Center. Our guest speaker is Tara Motheral from ERC. The class is "HR in a Hurry: Only What you Need to Know".

We are also looking for any stories you have concerning your clients that you would like us to take to Capitol Conference in Washington D.C. NAHU's Cap Con is February 23rd through 26th. Our Congressional and Senatorial members are interested to hear how current insurance laws are affecting their constituents. NEOHUA is going to have at least a dozen agents that will attend this year and three of them were lucky enough to earn a scholarship through OAHU. This scholarship is available to any member who has never attended the event or who are new to the Board of Directors. If you are interested in attending in the future, please keep looking for opportunities from OAHU and NEOHUA for 2021. I was lucky enough to win a scholarship 6 years ago and have been hooked ever since. Our government has a great deal to do with how our industry currently functions and how it will continue to function in the future.

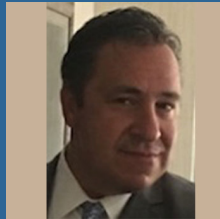
I look forward to seeing you in attendance at our events. Remember to stop by and say hello or introduce yourself if we have not yet had the pleasure of meeting. I hope all of you have an amazing day!!

NEOHUA Has a New Website!

Please take a moment to check out our redesigned website at www.neohua.com. We would love to hear your feedback!



Secretary
Andrew Toppin

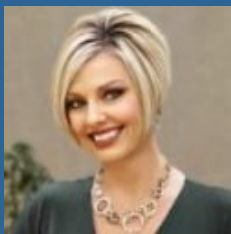


Immediate Past President
Frank Spinelli

Trustees



Shelley Chornak



Cindy Clements



Dave Cunix

Membership Program - January 30th

Dental 201 Workshop (1 CE)

Speaker: Melita McGill, Dental Care Plus

Live from NAHU: On the Eve of the Iowa Caucuses (CE applied for)

Speaker: Marcy M. Buckner, Vice President of Government Affairs, NAHU

Agenda:

Registration - 10:30 am

Dental 201 Workshop - 11:00 am

Lunch/NAHU Live - 12:00 pm

Where:

Comfort Suites, 1464 Town Center Boulevard, Brunswick, Ohio 44212

Sponsored by:



Cost: \$10 Members / \$50 Non-Members

[Register to Attend](#)

Swinging Into the New Year

This Event is NOW open to Members AND Non-members, with a limit of two tickets to purchase. Limited Space.

Thursday, January 30th, 2020 / 4:30 P.M. - 7:30 P.M.

TopGolf Cleveland, 5820 Rockside Woods Blvd N., Independence, OH 44131

\$35/person (Members and Non-Members)

Sponsor one of the golf bays for the event for \$100

[Register to Attend](#)

Did You Know... NAHU Offers Corporate Partnerships?



Jaime Lebron



Ann Stark

Administration Office



J&M Business Solutions, LLC
Sheri Maskow
3053 Nationwide Parkway
Brunswick, Ohio 44212
330.273.5756

A corporate partnership with NAHU allows you to access membership benefits on behalf of your business, bringing your employees specialized programs and information specific to your company's needs.

Partner Benefits:

- Saves over individual membership rates under the corporate partner list billing umbrella
- Streamlined billing process—one renewal date, one payment
- Company ownership of the membership slots—if a person on the membership billing leaves your employment, you select the new member replacement
- Unlimited access to members-only information on NAHU website
- Full access to the NAHU Compliance Corner for members on list bill, including monthly webinars
- Additional benefits for groups over 100

Membership Structure:

A corporate partnership means your company owns the membership, making it easy to maintain current memberships for all your staff. And the more memberships your company owns, the greater the dues discount you receive:

- 10-20 members equals a 3% discount
- 21-50 members equals a 5% discount
- 51-100 members equals a 10% discount
- 100+ members discount is equal to 1 month free!

*You also simplify the billing process with a corporate list bill.

Learn more at <https://nahu.org/membership/corporate-partnership>

Legislative Update

The most recent OAHU Legislative Committee Update covers numerous current issues including S.B. 9, S.B. 198, H.B. 388, S.B. 97, ACA Taxes and more.

[Click here to read more](#)



2020 NEOHUA Products Expo

March 18 at the MGM Grand Northfield Park

Tentative Agenda:

7:30 AM - Registration
8:00 AM to 12:00 PM - Continuing Education and Visit Exhibitors
12:00 PM - Lunch

1:00 PM to 4:00 PM - Ethical Dilemmas and the Life / Health Insurance Industry
(3 Hours of Ethics CE)

Presented by Richard M Muccio, RMM Financial Services, Inc.

A study of ethics and the law as it relates to the life/health insurance industry along with an exploration of the ethical dilemmas confronting the life/health insurance industry with examples of agents, clients, and companies that have made the wrong decision.

4:00 PM - Adjourn

Speakers and Continuing Education topics will be announced soon

All attendees must be age 21 or older

Register to Attend

If you are interested in donating an item for our Chinese Raffle, please email neohiohua@gmail.com. All proceeds from the Raffle will go to Habitat for Humanity.

Sponsorships/Exhibitor Tables:

- Opportunity to meet local agents and brokers.
- Opportunity to identify agent/broker partners.
- Opportunity to expand your market presence and grow your business!
- Opportunity to see old friends and make new ones!

View Sponsor Information

Current Sponsors:

The Dental Care Plus Group
J.L. Thomas

Membership

Thinking of Joining NAHU? [Click here](#) to see what you can expect once you join.

Northeast Ohio Health Underwriters Association

www.neohua.com

330.273.5756

